



**Flat 3 26 Hilgrove Street, St. Helier, Jersey, JE2 4SL**  
**£1,150 Per Month**

## 26 Hilgrove Street, St. Helier, JE2 4SL

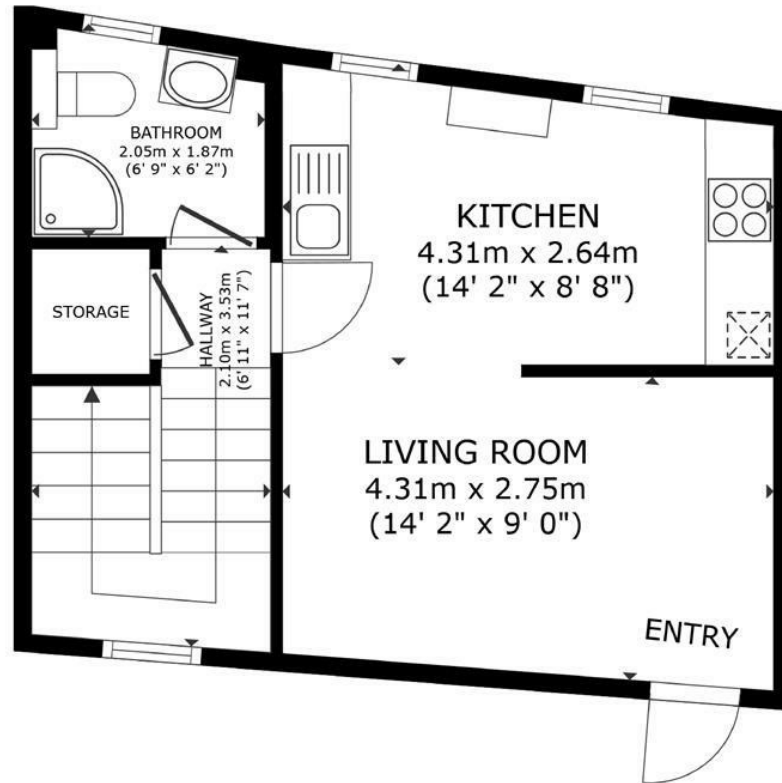
### NEW RENTAL INSTRUCTION

This sunny and very well maintained one bedroom duplex apartment is available to rent now. Centrally located just a minutes walk from King Street and the Market, the flat forms part of a period building of just 3 flats and the accommodation benefits from an open plan living/kitchen (fully applianced with a breakfast bar), secure balcony, electric heating, new shower room and a double bedroom. Available immediately part furnished. Entitled/Licensed. Call now to register your interest.

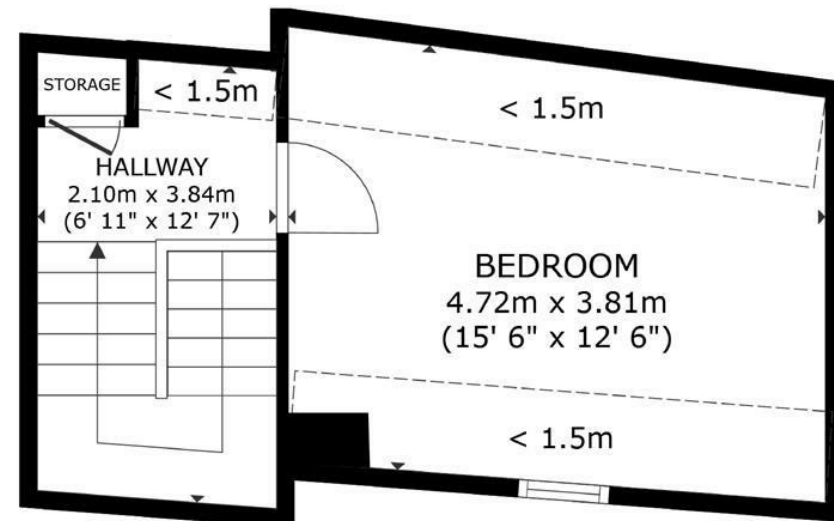
### VIEWING

Please call Slomans on 87 97 87. Please note that all areas and measurements given in these particulars are approximate and rounded. The text, photographs and floor plans are for general guidance only.





FLOOR 1



FLOOR 2

GROSS INTERNAL AREA  
 FLOOR 1 33.4 m<sup>2</sup> (359 sq.ft.) FLOOR 2 17.7 m<sup>2</sup> (190 sq.ft.)  
 EXCLUDED AREAS : REDUCED HEADROOM 8.1 m<sup>2</sup> (87 sq.ft.)  
 TOTAL : 51.1 m<sup>2</sup> (550 sq.ft.)  
SIZES AND DIMENSIONS ARE APPROXIMATE, ACTUAL MAY VARY.



